

CASE STUDY



WHAT

SeaCure® 20" Surface Casing

WHERE

Ballindalloch, UK North Sea

WHEN

Q2 2019

WITH

Ocean Valiant MODU

WHO

Total E&P UK

WATER DEPTH

115m

WHY

Get cement back to seabed

Casing pressure testing pre-BOP run

Optimise drill out

Save bit life

Save mud system from green cement contamination

Improve BHA reliability

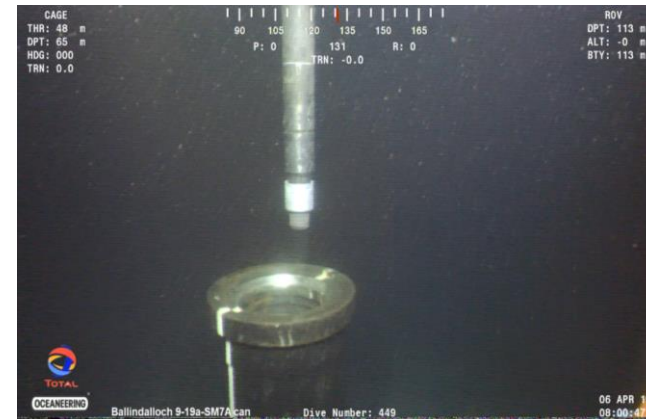
Clinical execution job

Minimise cement volume pumped

Minimise cement contamination

Minimise cement displacement

Minimise cement patio around WH



CHALLENGE

1. Getting cement back to seabed
2. Pressure testing casing against channelled displacement fluid through thixotropic cement in shoetrack
3. Cement patio around WH

SOLUTION

The clinical execution of SeaCure Cementing service delivers low-risk, high-value cementing operations and casing hydraulic integrity solutions.

RESULTS

- Cement back to seabed
- Solid casing pressure test after cement job before BOP installation
- Drilled SeaCure shoe out in 10 minutes
- No mud related conditioning time or cost for cement contamination
- Delivered on budget on time
- Zero NPT
- Bit drilled to TD with no issues
- No BHA failures in next section