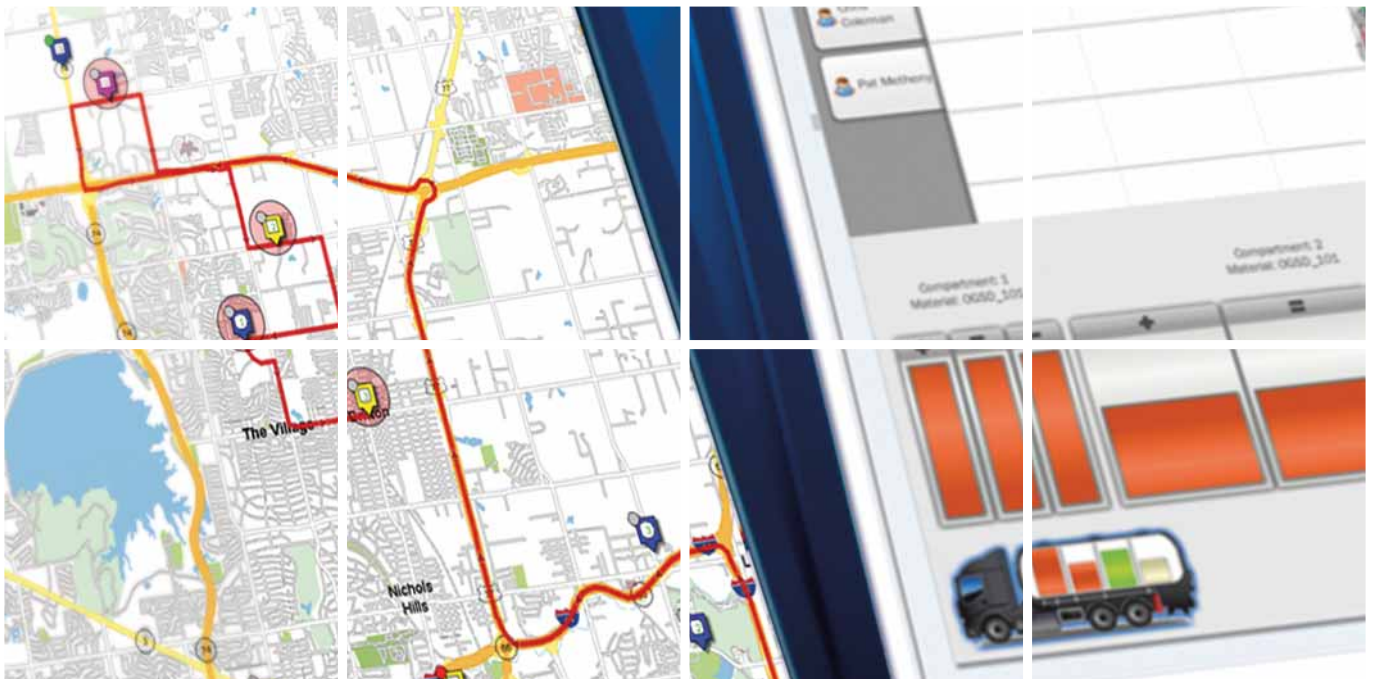


Planned to perfection

Integrated Dispatch Management (IDM) –
Tour planning and dispatching with SAP



Planned to perfection

Integrated Dispatch Management (IDM) – Tour planning and dispatching with SAP



The trade and logistics industry is currently facing multiple core challenges, with the delivery times required by the market growing shorter and shorter. At the same time, however, the distances involved are increasing – as are fuel prices, personnel costs and the level of service demanded. As a consequence, businesses must now rely on intelligent transport planning and dispatching to optimize their margins.

The combination of SAP SDM / OGSD pre-dispatching and SAP SDM / IDM (Integrated Dispatch Management) ensures optimum results from margins.

IDM helps dispatch planners create optimum tours: orders from SAP are combined with resources such as currently available vehicles, for example, to ensure the best possible results.

Lower costs

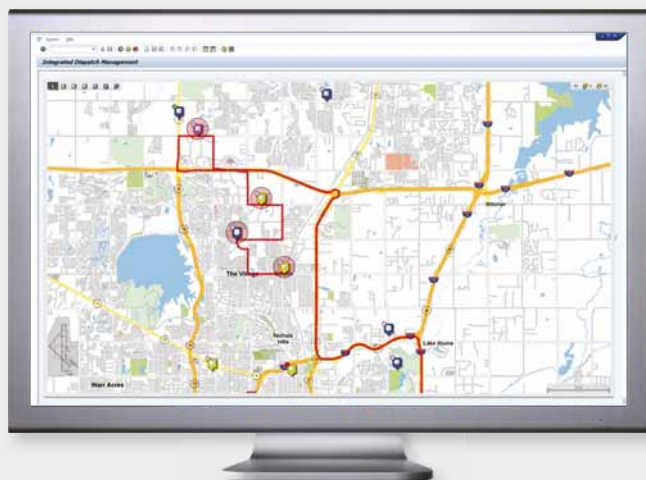
Thanks to features such as real-time tour optimization, the solution effectively lowers transportation costs by reducing factors such as kilometers driven, drive time, vehicle use and overtime by up to 15 percent.

Faster planning

Thanks to intelligent support from the system, IDM helps you reduce the time needed for planning and dispatching by up to 80 percent.

Improved service

IDM enables you to minimize processing time for new orders as they come in. And, thanks to improved planning and greater transparency, available delivery deadline information becomes more reliable – shortening your response time and improving the quality of information you provide.



Comprehensive features

IDM offers you a wealth of innovative tools and features to ensure intelligent and highly efficient transport planning and dispatching.

Key characteristics of IDM:

- Support for centralized and decentralized planning scenarios
- Internet-based application – available anywhere
- Clear schematic separation – mapping material and Gantt chart on separate screens
- Tour planning and dispatching on the basis of SAP orders
- Very user-friendly interface, enabling direct interaction with the geographic mapping material, Gantt chart and vehicles
- Intuitive usability = simple usability
- Visual presentation of relevant information provides maximum support for decision-making
- Integration of best-buy calculations into the dispatching process
- Multi-seat capability, incl. interaction between multiple dispatch personnel during planning
- Real-time optimization of planned tours
- Zero-modification SAP master data enhancements for planning-relevant objects (e.g. vehicles, customers, vendors and material)
- Automatic generation of necessary SAP documents
- Configurable document status management to ensure consistent SAP documents
- Integration of on-board/telematics equipment



Intelligent calculation

All transport planning clearly has the same objective: the available resources must be deployed and combined as optimally as possible. This process is also significantly affected by numerous constraints: these may be special, customer-specific items or even stem from specific strategic corporate policies.

Highlights of IDM include the capability to accept a wide range of parameters and then apply these to the ensuing calculation or optimization.

Typical examples of such parameters include:

- Customer and vendor master data (addresses, time windows)
- Vehicle data (capacities, compartment sizes/ types)
- Depot/terminal data
- Quota management
- Shift times, normal working times, overtimes
- Order data and size
- Stoppage time (loading/offloading)
- Fixed and variable costs

- Regions
- Priorities
- Rates
- Equipment required for loading/offloading (hose length, etc.)

Support for all scenarios

For example, the following tour planning scenarios are supported:

- Planning of tours, shifts and multi-day tours
- Single- and multi-depot planning
- Depot-to-depot supply
- Optimum loading capacity check of bulk cargo for various vehicle types



Support for all planning types

IDM gives you the maximum possible freedom for your planning: you define the level of system support you need to match your requirements. Manual, semi-automated or fully automated: with IDM you're assured of the best possible solution for your transport planning.

Dispatch directly from SAP

No more manual transfers and time-consuming interface tuning for third party-software: with IDM you simply plan directly within SAP. Since the add-on is already based on SAP's ABAP language, this ensures smooth, secure and rapid communication between your dispatching solution, your ERP software and the SAP SDM / OGSD sales system.

Results available within the SAP system:

- Optimal tours, including vehicle resources assigned and the order of stops with the corresponding orders
- Minimal planning costs
- Geographical presentation of tours

- Tour as a SAP object
- Automatic generation of follow-on documents
- Integration of on-board equipment
- Maximum automation for processes via data collation from SAP SDM / OGSD



Advantages at-a-glance:

- Acceleration of planning and dispatching processes by up to 80 percent
- Reductions to tour length, drive times, number of trips, overtime, etc. ...
- ... resulting in lowering of transport costs by up to 15 percent
- Calculation of effective setup, drive and unloading times in the planning process
- Constraint checking in relation to order, vehicle, etc.
- Improved transparency both during tour planning and in relation to vehicle costs
- Efficiency gains thanks to minimization of manual data entry
- Maximum flexibility for handling unavoidable short-term changes and new orders
- Improved customer service thanks to proactive exception management, reliable shipping status communication and improved punctuality for deliveries
- Simple simulation of multiple planning runs to produce comparisons
- Easy-to-read presentation of results in graphical and tabular formats
- Comparison of TARGET tours with real-world ACTUAL tours
- Consideration of constraints – such as loading time windows, for example
- Maximum flexibility assured by option of developing custom enhancements to the system
- Improved customer service due to improved transparency (waiting times, time buffers)
- Improved cost effectiveness, thanks to a greater degree of control for planners and dispatchers
- Improved economic efficiency thanks to real-time interaction between IDM and mobile devices (onboard computers, smartphones, handhelds)

IDM significantly improves the capabilities of your dispatching and tour planning. You can accelerate your planning, lower your transport costs and improve your service.

All of this makes SAP SDM / IDM the perfect system for satisfying the current and future challenges facing the transportation industry.



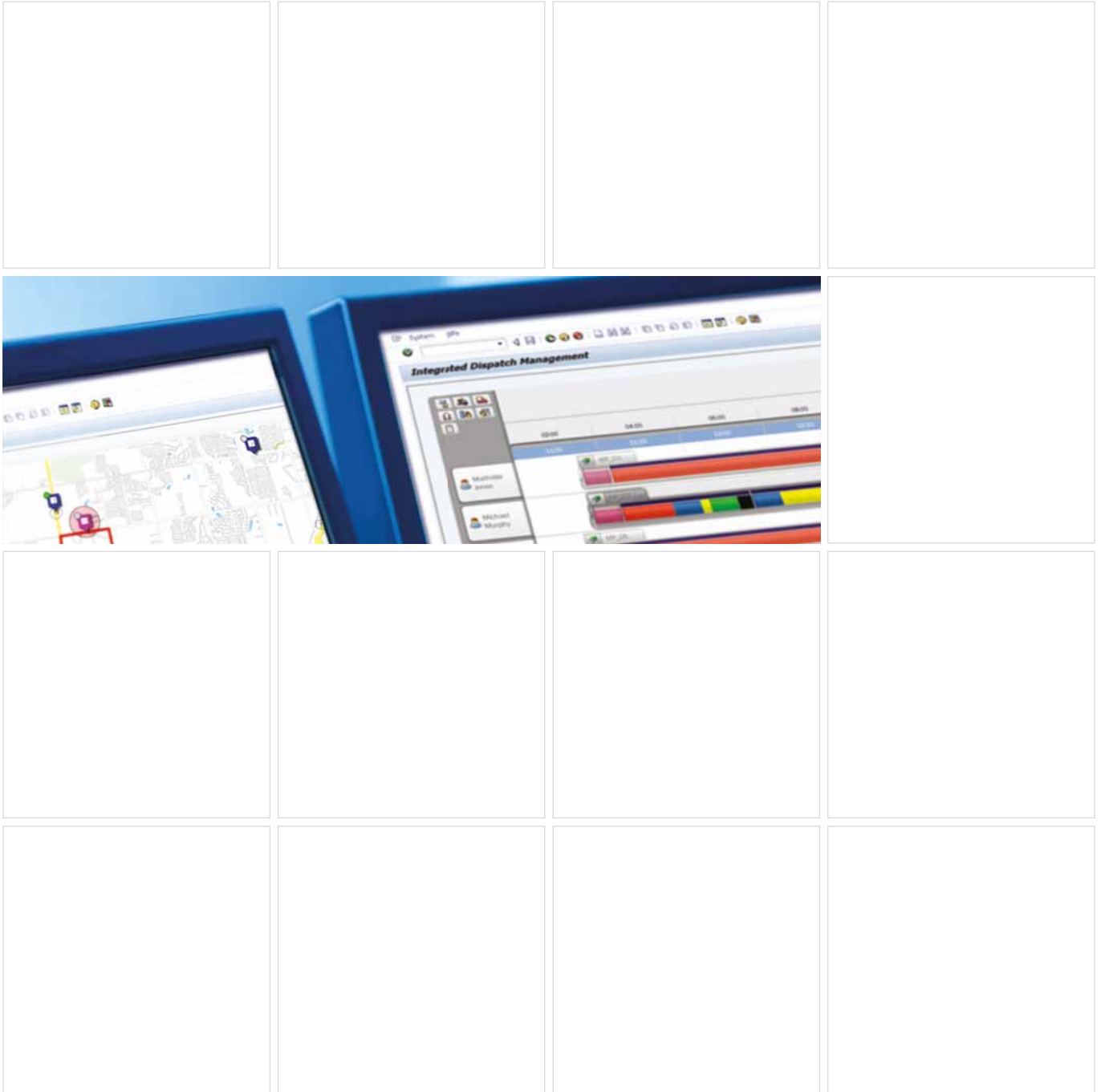
About Implico

The Implico Group optimizes logistics and business processes for oil and gas downstream companies. The international consulting and software company with its headquarters in Hamburg, Germany, has subsidiaries in Malaysia, Romania and the USA. Founded in 1983, the company today employs around 200 staff.

Implico provides consulting services, data services and software solutions for the entire supply chain. Leading oil and gas companies all over the world trust in Implico's industry expertise and high-performance IT solutions.

Implico offers unique consulting expertise surrounding the SAP Secondary Distribution Management for Oil & Gas (SAP SDM) and SAP Retail Fuel Network Operations (SAP RFNO) downstream solutions. SAP SDM steers and optimizes the complete order-to-cash process. SAP RFNO automates all payment and quantity flows of service station networks.





www.implico.com