

# WORK REPORT

**Customer :** Premonor S.A.

**End User :** Fluxys,  
LNG Gas Terminal

**Engineering :** Sacry-Fluor

**EPC:** UTE F.D.B Zeebrugge  
Felguera IHI-Balzola

**Location :** Zeebrugge, Belgium

**Project :** Grouting BOG Compressors  
New Installation  
5<sup>th</sup> Tank Expansion Project

**Equipment:** 4 x BOG IHI Compressors  
model 32HF-4N-CM

**Work Period:** June 2017



In this opportunity our client Premonor S.A. (*Prefabricación y Montajes del Noroeste S.A.*), required the services of Alphatec for the grouting activities for the mechanical assembly of 4 units of BOG Compressors.

Our main job was supply and install the Alphatec®800epoxy grout for 4 brand-new BOG compressors at Fluxys facilities and other auxiliar as water and lube oil.



Fluxys is a Belgium-based company, mainly acting as a natural gas transmission system operator.

The project called “5th Tank and Bog Facilities Project Zeebrugge LNG Terminal” required the epoxy grout of four compressors with a capacity of 12600 kg/h each one plus the frames and their motors.

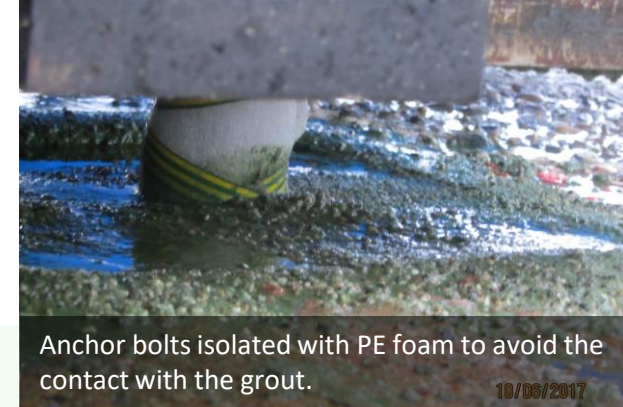
After installation and alignment of equipment and structural supports, we proceeded to prepare the surface cleaning with blower & vacuum, and set in place the formwork.



After the mechanics installed & adjusted the compressors and the motors, we proceeded to make the formwork around the frames.



Compressor frame with formwork ready for the grout.



Anchor bolts isolated with PE foam to avoid the contact with the grout.

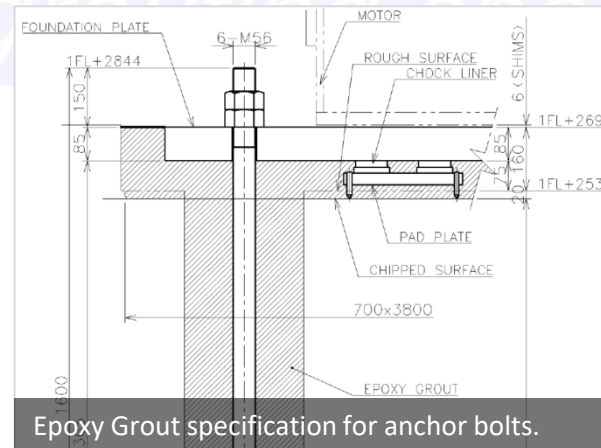
When mechanics were satisfied with the alignment conditions, and all surfaces in contact with the grout had been cleaned

thoroughly with dissolvent, each frame were poured with Alphatec® Epoxy Grout AT800.

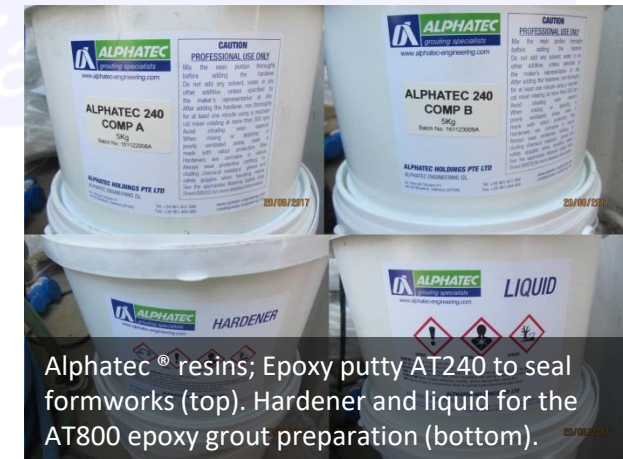


Checking a proper thickness for the Alphatec® Epoxy Grout.

Carefully each anchor bolts is isolated with PE foam to avoid the contact with the grout, and every formwork is sealed with an epoxy putty to avoid leaks during the pour process.



Epoxy Grout specification for anchor bolts.



Alphatec® resins; Epoxy putty AT240 to seal formworks (top). Hardener and liquid for the AT800 epoxy grout preparation (bottom).

To pour the epoxy grout it is absolutely necessary doing it through one point to avoid formation of cavities under the bed.



Frame grouted with AT800 (in green).

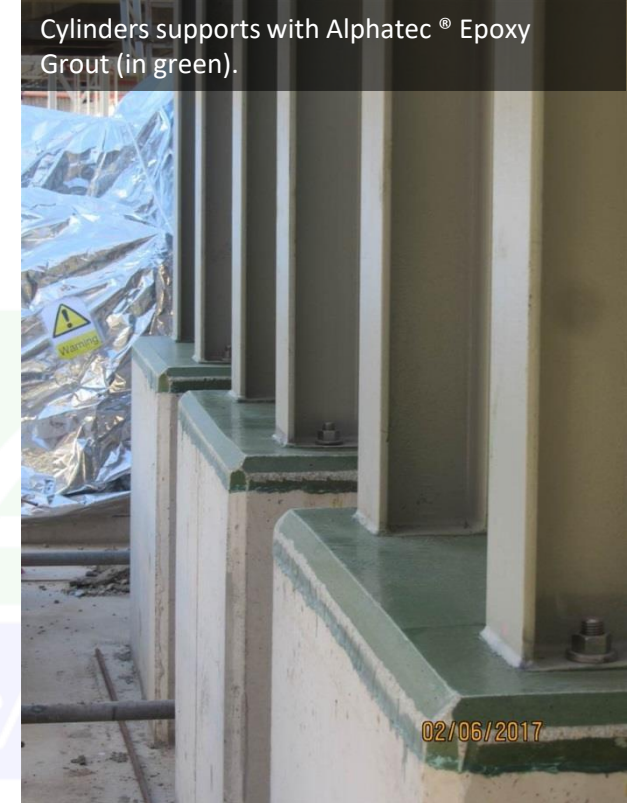


Compressor frame grouted with AT800.

A second top layer of 25-30 mm of Alphatec®800 was poured to cover all exposed concrete, acting as protective coat and oil barrier.



Inspecting and cleaning sharp edges.



Cylinders supports with Alphatec® Epoxy Grout (in green).

Finishing of all grouted areas was revised to avoid sharp edges and ensuring a perfect levelled seal between concrete-epoxy grout layers.



Alphatec® branded resin-based products  
Offering global services with more than  
**4,000** contracts in **57** countries

info@alphatec-engineering.com



- > Anchor Bolts Replacement
- > Foundation Repairs
- > Epoxy Grouts
- > Cold Joints



- ⊕ Regional Offices
- Representatives
- Global Projects

Contact us for your local representative

Europe H/O - Ireland +353 1 853 5842  
 Factory - Spain +34 961 451 599  
 Asia Office/Factory - Malaysia +60 6 647 7333

*Celebrating 40 Years of Machinery Grouting Operations*  
1977 - 2017

[www.alphatec-engineering.com](http://www.alphatec-engineering.com)

